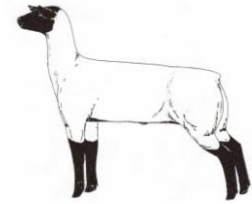


**Turner County
Open Class Market Lamb Show
Turner County Fairgrounds
Parker, South Dakota**



**Tuesday, August 16, 2011
Weigh-ins: 3 – 4:30 p.m. Show Time: 6 p.m.**

Rules and Regulations:

- Health papers will be required at check in. All lambs must be free of contagious diseases and have a scrapie tag in the lamb's ear.**
- Classes will be determined by weight. No re-weighs allowed. Turner County 4-H lambs will use County Fair weights.**
- All decisions of the show committee and judge are final.**
- The Turner County Fair and the show committee are not responsible for accidents.**
- Advance entries must be postmarked or in the Turner County Fair Office by August 12, 2011.**
- Entry fee is \$5 in advance; \$10 day of show. Entry fee for Turner County 4-H lambs is \$2 at registration.**
- No stall space or electricity will be available. You must work out of your trailer.**
- Wash racks will be available.**
- 4-H Code of Ethics will be followed.**
- Contact Randy Wirt at 366-2864 or Todd Nordmann 201-7946 for more information.**

Champion Lamb: \$100

Reserve Champion: \$50

**Advanced Registration
Turner County Open Class Lamb Show**

Enter _____ head of market lambs at \$5 per head. \$ _____ enclosed

Name: _____

Address: _____

**Send entries to: Turner County Fair Office
PO Box 665
Parker SD 57053**