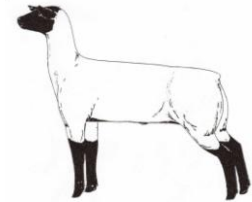


Turner County  
Open Class Market Lamb Show  
Turner County Fairgrounds  
Parker, South Dakota



Tuesday, August 17, 2010  
Weigh-ins: 3 - 4:30 p.m. Show Time: 6 p.m.

**Rules and Regulations:**

- ❑ Health papers will be required at check in. All lambs must be free of contagious diseases and have a scrapie tag in the lamb's ear.
- ❑ Classes will be determined by weight. No re-weighs allowed. Turner County 4-H lambs will use County Fair weights.
- ❑ All decisions of the show committee and judge are final.
- ❑ The Turner County Fair and the show committee are not responsible for accidents.
- ❑ Advance entries must be postmarked or in the Turner County Fair Office by August 13, 2010.
- ❑ Entry fee is \$5 in advance; \$10 day of show. Entry fee for Turner County 4-H lambs is \$2 at registration.
- ❑ No stall space or electricity will be available. You must work out of your trailer.
- ❑ Wash racks will be available.
- ❑ 4-H Code of Ethics will be followed.
- ❑ Contact Randy Wirt at 366-2864 or Todd Nordmann 201-7946 for more information.

**Champion Lamb: \$100**

**Reserve Champion: \$50**

---

Advanced Registration  
Turner County Open Class Lamb Show

Enter \_\_\_\_\_ head of market lambs at \$5 per head.      \$ \_\_\_\_\_ enclosed

Name: \_\_\_\_\_

Address: \_\_\_\_\_

Send entries to: Turner County Fair Office  
PO Box 665  
Parker SD 57053